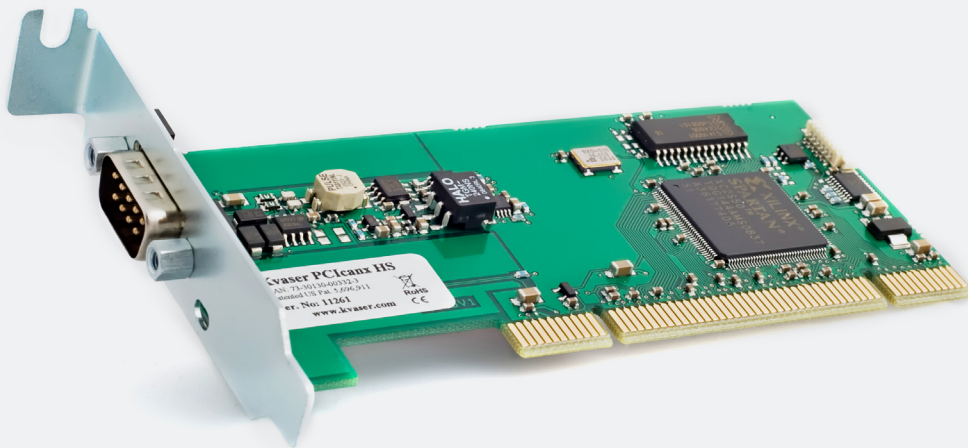
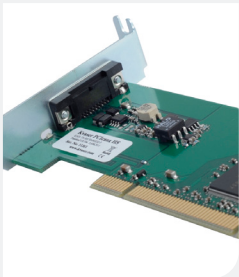
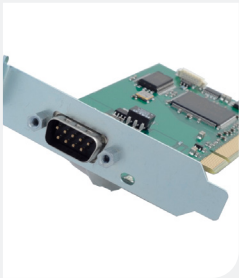




Learn more about
this product



Your Gateway to Efficient Connectivity

Kvaser PClcanx HS is a one channel, high speed CAN (controller area network) interface that can be used in both regular PCI and PCI-X slots. A galvanically isolated CAN bus driver protects the hardware, whilst the on board micro controller ensures high throughput.



Warranty

2-Year warranty. See our general conditions and policies for details.



Support

Free support for all products by contacting support@kvaser.com



EAN

73-30130-00332-3

Major Features

- Quick and easy plug-and-play installation.
- High-speed ISO 11898 compliant driver.
- Compliant with PCI 2.3
- The board fits in 3.3 V PCI-X, and 3.3 V and 5 V PCI busses.
- Compatible with our PCICan boards.
- I/O mapped for quick reaction times.
- SJA1000 CAN Controllers from Philips, with 64-byte receive FIFO.
- Supports CAN 2.0 A and 2.0 B (active).
- Pin assignment according to CiA-DS102.
- 16 MHz CAN oscillator frequency.
- Galvanic isolation between the CANcontroller and the CAN-driver.
- Interfaces the CAN bus with DSUB CAN connector.
- Wide temperature range, -40 to +85 °C.
- Compatible with J1939, CANopen, NMEA 2000® and DeviceNet. Higher layer protocol translation handled by the user's application. For software support please see our Technical Associates products and our Software Download page (www.kvaser.com).

Support

Documentation, Kvaser SDK and drivers can be downloaded for free at www.kvaser.com/downloads.

Kvaser SDK is a free resource that includes everything you need to develop software for the Kvaser CAN interfaces. Includes full documentation and many program samples, written in C, C++, C#, Delphi, Visual Basic, Python and t script language.

Kvaser CAN hardware is built around the same common software API. Applications developed using one device type will run without modification on other device types.

Technical Data

Channels	1
Connectors	D-SUB 9
Current Consumption	PCICanx 4xHS: max 400 mA @ 5 V
Dimensions	Low profile, 121 x 65 mm
Error Counters Reading	Yes
Error Frame Generation	No
Galvanic Isolation	Yes
Interfaces	CAN, PCI
Messages Per Second Receive	14000 mps
Messages Per Second Sending	18000 mps
Operating Systems	Linux, Windows ¹
Regulatory Compliance	CE
Silent Mode	Yes
Sound	No
Temperature Range	-40 to +85 °C
Weight	63 g

¹ Windows XP, Vista, 7, 8, 10 (IA-32 and x86-64)
Windows 11 (x86-64)