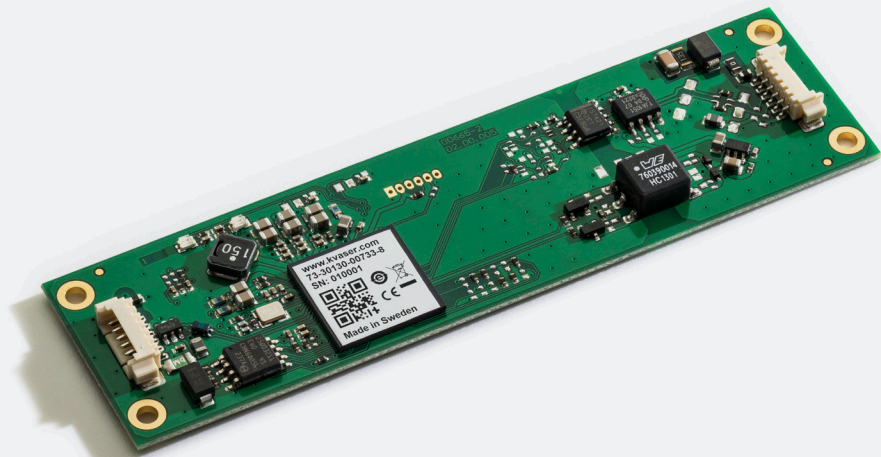
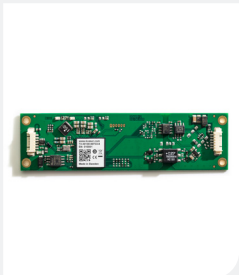
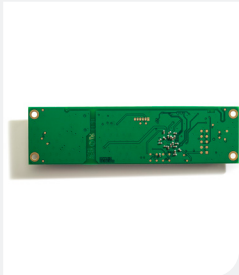
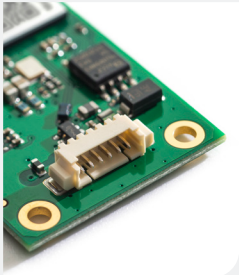




Learn more about
this product



Your Gateway to Efficient Connectivity

The Leaf Light v2 CB is the bare circuit board version of Kvaser's popular Leaf Light v2 interface - a single-channel, high speed, USB-to-CANbus interface. Having made its name as the workhorse of USB to CAN interfaces, Kvaser's Leaf Light product series provides reliable, low cost connection to the PC.



Warranty

2-Year warranty. See our general conditions and policies for details.



Support

Free support for all products by contacting support@kvaser.com



EAN

73-30130-00733-8

Major Features

- The Kvaser Leaf Light HS V2 CB is a high-speed USB interface for CAN that offers loss free transmission and reception of standard and extended CAN messages on the CAN bus.
- Both USB and CAN are connected using 6-way connectors and mate with Molex 51021 PicoBlade™ (e.g. housing 510210600 and terminal 50079-8000).
- 8000 messages per second, each timestamped with 100 microsecond accuracy.
- Supports both 11-bit (CAN 2.0A) and 29bit (CAN 2.0B active) identifiers.
- High-speed CAN connection (compliant with ISO 11898-2), up to 1 Mbit/s.
- Galvanic isolation, enhancing protection from power surges or electrical shocks.
- Local buffering and preprocessing results in high performance and a reduction of time critical tasks for the PC.
- Compatible with J1939, CANopen, NMEA 2000® and DeviceNet. Higher layer protocol translation handled by the user's application. For software support please see our Technical Associates products and our Software Download page (www.kvaser.com).

Support

Documentation, Kvaser SDK and drivers can be downloaded for free at www.kvaser.com/downloads.

Kvaser SDK is a free resource that includes everything you need to develop software for the Kvaser CAN interfaces. Includes full documentation and many program samples, written in C, C++, C#, Delphi, Visual Basic, Python and t script language.

Kvaser CAN hardware is built around the same common software API. Applications developed using one device type will run without modification on other device types.

Technical Data

Bit Rate	40-1000 kbps
Channels	1
Connector	Molex Picoblade TM
Current Consumption	Typical 90 mA
Dimensions	27 x 100 x 5 mm
Error Frame Generation	No
Error Counters Reading	No
Galvanic Isolation	Yes
Interfaces	USB, CAN
Material	PA66
Messages Per Second Receive	8000 mps
Messages Per Second Sending	8000 mps
Operating Systems	Linux, Windows ¹
Regulatory Compliance	CE, FCC
Silent Mode	No
Temperature Range	-20 to +70 °C
Timestamp	100
Weight	10 g

¹ Windows 7, 8, 10 (IA-32 and x86-64)
Windows 11 (x86-64)