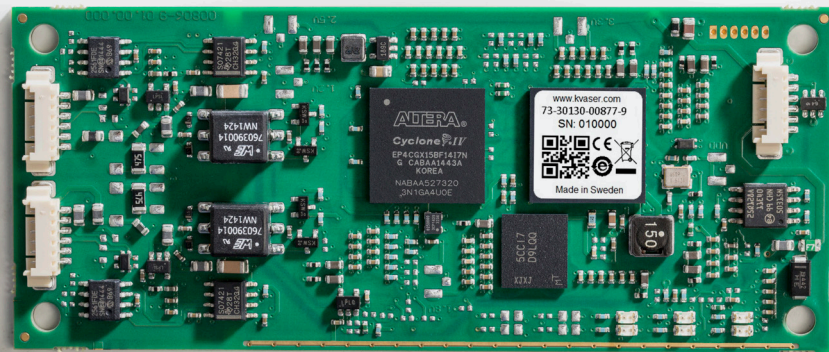
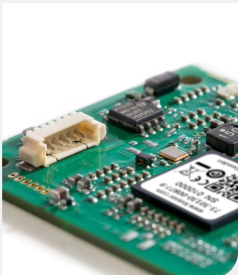
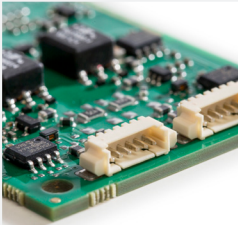
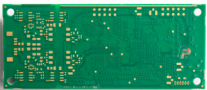




Learn more about
this product



Your Gateway to Efficient Connectivity

The USBcan Pro 2xHS v2 CB is a bare circuit board version of Kvaser's USBcan Pro 2xHS v2 dual channel CAN or CAN FD interface with scripting capability, the USBcan Pro 2xHS v2 CB is supplied 'bare board' i.e. without a housing, and can thus be built into any system.

The Pro version is shipped with Kvaser TRX, a lightweight development environment that lowers the bar when starting out programming the device.



Warranty

2-Year warranty. See our general conditions and policies for details.



Support

Free support for all products by contacting support@kvaser.com



EAN

73-30130-00877-9

Major Features

- Plug-and-play installation.
- Supports both 11-bit (CAN 2.0A) and 29-bit (CAN 2.0B active) identifiers.
- Power derived from the USB connection, CAN, or an in-built power supply.
- High-speed CAN connection (compliant with ISO 11898-2), up to 1Mbit/s.
- Kvaser MagiSync provides automatic time synchronization between several PC-to-bus interfaces connected to the same PC.
- Optimize protocol handling, pre-filter CAN messages directly on the interface, or simulate missing hardware with programming functionality.
- Compatible with J1939, CANopen, NMEA 2000® and DeviceNet. Higher layer protocol translation handled by the user's application. For software support please see our Technical Associates products and our Software Download page (www.kvaser.com).

Support

Documentation, Kvaser SDK and drivers can be downloaded for free at www.kvaser.com/downloads.

Kvaser SDK is a free resource that includes everything you need to develop software for the Kvaser CAN interfaces. Includes full documentation and many program samples, written in C, C++, C#, Delphi, Visual Basic, Python and t script language.

Kvaser CAN hardware is built around the same common software API. Applications developed using one device type will run without modification on other device types.



Technical Data

Bitrate	50-1000 kbps
Channels	2
Connectors	Molex 6-pin
Current Consumption	Max 500 mA
CAN FD	Yes
Dimensions	42 x 100 x 6 mm
Error Frame Detection	Yes
Galvanic Isolation	Yes
Interfaces	USB, CAN
Operative Systems	Linux, Windows ¹
Regulatory Compliance	CE, FCC
Silent Mode	Yes
t-Script	Yes
Temperature Range	-40 to +85 °C
Timestamp Resolution	1 µs
Weight	20 g

¹ Windows 7, 8, 10 (IA-32 and x86-64)
Windows 11 (x86-64)