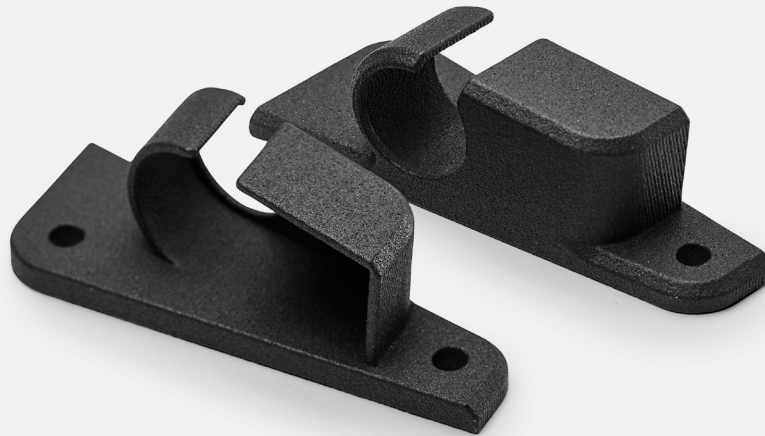




Learn more about
this product



Your Gateway to Efficient Connectivity

Kvaser mounting brackets provide a new way to secure your Kvaser interface, reducing potential for cable wear and improving the tidiness of the installation. These professional-grade 3D printed brackets are lightweight and can be easily mounted with double-sided tape, yet are sturdy enough to be securely fastened with screws via the pre-drilled holes on either side of the bracket, without adding unnecessary bulk to the device.

The material used to 3D print the brackets, PA 2200, is a robust, high-performance alternative to plastics like ABS. Resistant to chemicals, environmental and UV degradation, these mounting brackets are perfect for your toughest installation.



Warranty

2-Year warranty. See our general conditions and policies for details.



Support

Free support for all products by contacting support@kvaser.com



EAN

73-30130-01166-3

Major Features

- Set of two
- Distance between pre-drilled mounting screw ports: 51 mm
- Made of PA2200
- Resistant to UV degradation
- Lightweight

Support

At Kvaser, we are committed to providing exceptional support for all our accessories, including cables, SD cards, and mounting brackets. Our dedicated support team is here to assist you with any inquiries or issues you may encounter. Whether you need help with installation, troubleshooting, or compatibility questions, we are here to ensure you have a seamless experience with our products.

Contact Us:

Technical Support: For technical assistance, please reach out to our knowledgeable support team at support@kvaser.com

Documentation and Resources:

Access detailed manuals, FAQs, and troubleshooting guides on our website at www.kvaser.com/support

Warranty and Repairs:

For warranty information and repair services, please visit www.kvaser.com/warranty

Technical Data

Dimensions	22 x 65 mm
Material	PA2200
Regulatory Compliance	CE
Weight	20 g

Compatible devices:

Product name	EAN
Kvaser Leaf Light v2	00685-0
Kvaser Ethercan Light HS	00713-0
Kvaser Leaf Light HS v2 OBD II	00732-1
Kvaser Leaf Light HS v2 J1939-13	00787-1
Kvaser Leaf Pro HS v2	00843-4
Kvaser Leaf Pro HS v2 OBD II	00849-6
Kvaser Leaf Light HS v2 M12	00881-6
Kvaser Leaf Light HS v2 J1939-13 Type II	00915-8
Kvaser Ethercan HS	00976-9

